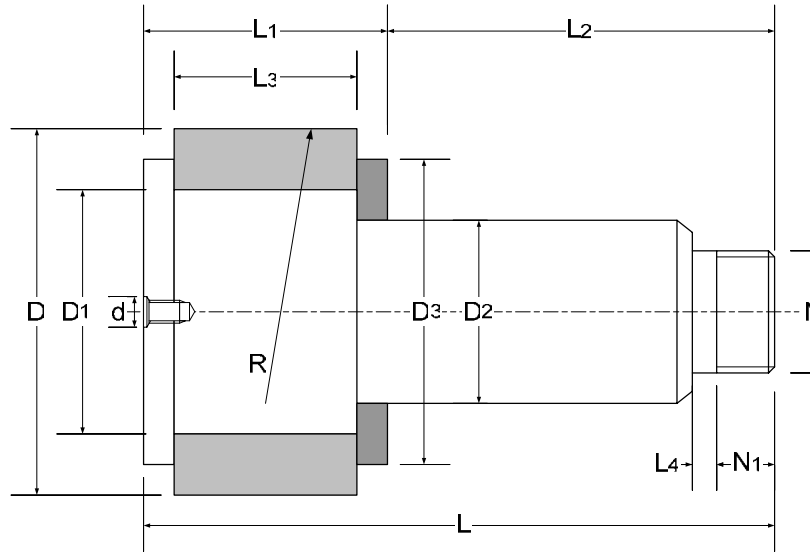


## Characteristics

**DesignMecha** Cam Follower has a great durability performance because of without needle bearing. Outer ring is in contact with stud surface as a line contact against point contact incase of with needle bearing, so that its keeps the precise dimension with more durable performance. Especially, outside surface of the outer ring and stud is treated by UNSM (Ultrasonic Nano crystal Surface Modification) treatment, which is a surface hardening technology by cold deformation. It also makes a fine dimple surface, so that it has a great sliding performance for metal to metal contact.



Outer Dia (mm) ∅D±0.02	Dimension (mm)											
	D2 ±0.02	L3 -0.1	D1	L1	L	L2	N	N1	D3	d	R	L4
14.5	10	6	11.6	9	28.5	19.5	M10*0.75	6.5	13	M3*0.5	100	-
16	8	8.4	9	12	21	9	-	-	14	M4*0.7	-	-
19	10	10	12.5	14	23.5	9.5	-	-	17	M3*0.5	-	-
19	10	10	12	14	32	18	M10*0.75	7	17	M4*0.7	-	-
21	13	12	15	16	38	22	M12*1.0	7	19	M4*0.7	-	-
24	13	12	15	16.4	34	17.6	-	-	22	M5*0.8	-	-
24	13	12	16.5	16	38	22	M12*1.0	7	22	M5*0.8	100	-
24	14	12	17.5	16	38	22	M12*1.0	5	22	M3*0.5	100	2.5
30	17.5	14	21.2	18.5	37.5	19	M12*1.0	7	28	M3*0.5	100	-
30	17.5	14	21.2	18.5	60	41.5	M10*0.75	8	26	M3*0.5	500	3.5